

Shame: the energy that feeds addiction

By
Becky Georgi, MS, LPC, LCAS, CCS
Jeffrey M. Georgi, M.Div., MAH, LCAS, LPC, CGP
Consulting Clinical Associate
Division of Addiction and Translation
Duke University Medical Center
Georgi Educational and Counseling Services
Durham, NC
jeff@georgicounseling.com
919-286-1600



EGECS

Biological+Psychological+Social+Spiritual
Vulnerability Liability Context Bankruptcy

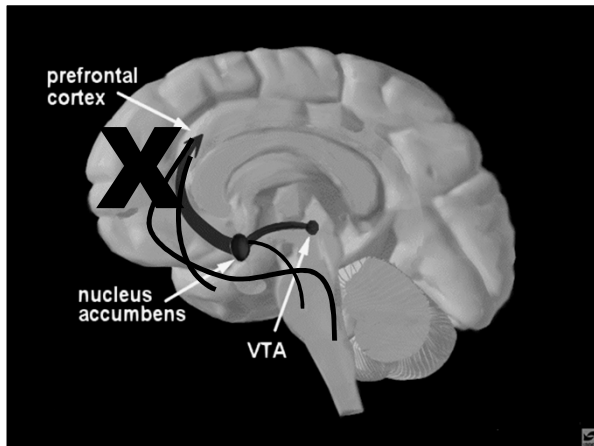
plus
Experience
equals

Addiction

EGECS

Drug of Choice
Wrong
Drug of addiction

EGECS



The emotional continuum

- **Affect**
A biological limbic response below conscious awareness – immediate (or at least close)
- **Feeling**
Affect registered in the neocortex
- **Emotion**
Feeling given a psychological, relational and intellectual context
- **Mood**
Emotion experienced over time

Tompkins, 1985 ©CECS

Affect – pairs

positive

Interest – Excitement

Enjoyment – Joy

neutral

Surprise – Startle

©CECS


Affect – pairs
negative

Fear – Terror
Distress – Anguish
Anger – Rage
Dissmell - Disgust
Shame – Humiliation

©GCECS

Shame - Humiliation

Shames shatters all forms of human connection.



we hide

we turn away –
down and to
the left

©GCECS

The Raw Power of Shame

- We are exiled from all we know
all we love
all we are
all we will be

All hope is lost
We are disconnected from ourselves
We are.....

©GCECS

Shame - Humiliation

Shame breaks all forms of connection



we lose face

©GEMS
GEMS

Biology of shame

shame = ↑ stress =

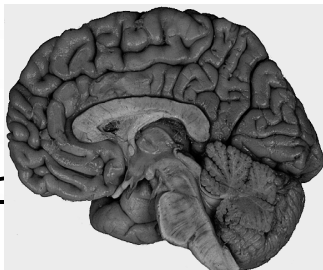
glucocorticoid storm

the brain is traumatized

©GEMS

Frontal cortex goes off line

Limbic and primitive parts of the brain take over – Polyvagal theory



©GEMS

Glucocorticoid Storm

- Memory is impaired (excitotoxicity in cells in hippocampus)
- Prefrontal cortex slows
- Amygdala takes over
- Sub cortical structures increased activity
- Global decrease in Serotonin
- Growing evidence that these biological vulnerabilities can be transmitted to the next generation (Sapolsky, 2008)

©GCECS

Shame - Humiliation

- The shame affect has the ability to disrupt all forms of mental activity.
- Shame forces us to consider who we were before the shame hit and to what we have returned as the shame subsides.
- Shame forces a painful self-awareness which strips us of happiness and leaves us alone and naked in our emptiness.
- “An internal hemorrhage, an immediate shutter” (Sartre)

©GCECS

Psychology of Shame

- Not merely a symptom of underlying Psychiatric condition.
- Gives energy to the Biological variable.
- Using a self Psychological frame - Heinz Kohut.
- Effort to combine the two extremes of the Freudian analytical continuum.

©GCECS

Psychology of Shame

the baby

boundless, powerful, magic vs. small, helpless, vulnerable
narcissistic, exhibitionistic, grandiose needs

Good Enough Parenting

- Mirroring.
- Empathetic.
- Attending.
- Attuned.
- Self object
- Strong.
- Safe.
- Consistent.
- Soothing.
- Self object.

©GEGCS

Parenting/object

Good Enough Parenting = appropriate frustration

- Needs met: transmuted and internalized.
- Healthy self esteem.
- Appropriate ambition.
- Enthusiasm for life.
- Sense of wholeness.
- Needs met: transmuted and internalized.
- Personal ideals.
- Ability to identify feelings.
- Internal safety.
- Ability to self soothe.

©GEGCS

Healthy Attachment

Clear Boundaries

Cohesive Self

©GEGCS

Psychology of Shame
the baby

boundless, powerful, magic vs. small, helpless, vulnerable
narcissistic, exhibitionistic, grandiose needs

Not Good Enough Parenting
failures in

• Mirroring.	• Strong.
• Empathetic.	• Safe.
• Attending.	• Consistent.
• Attuned.	• Soothing.
• Self object involvement.	• Self object involvement.

©GEGCS

Parenting/object

Not Good Enough Parenting = inappropriate frustration
abuse or neglect

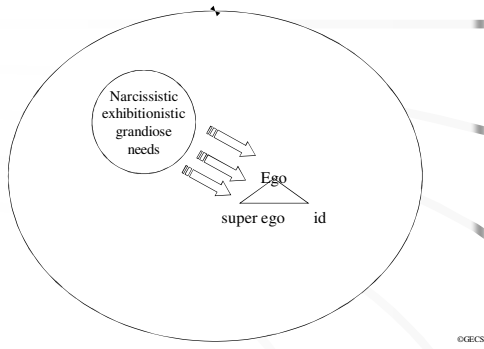
• Needs not met: not transmuted and internalized.	• Insecurity.
• Feeling of inadequacy.	• Ill defined sense of self.
• Emptiness.	• Unclear personal values.
• Need for approval.	• “Black/white” thinking.
• Critical of self/others.	• Needs for external reassurance.
• Need to Control!	• Inability to internally self soothe.

©GEGCS

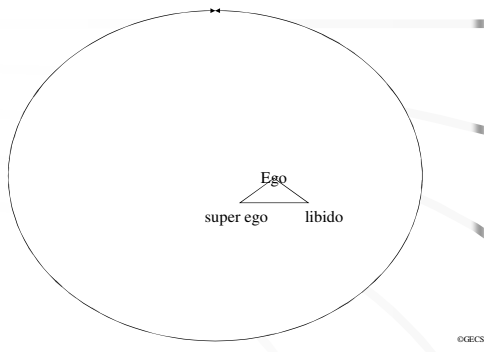
Unclear Boundaries
Fractured Sense of Self
Failure of Attachment

©GEGCS

Psychology of Shame



Psychology of Addiction



Psychology of Shame

Manifestation of False Self Structure

- Low Self Esteem:
 - don't see me, don't notice me, don't attend to me, don't compliment me, "I am not worth your time."
- or
 - "I am the best", "you are nothing without me", "give me ALL of your attention", "praise me ALL of the time." Any criticism is experienced as an ego assault, life is a zero sum game.

Psychology of Shame

Manifestation of False Self Structure
Guilt/Shame/Isolation

- Guilt - pangs of conscience over actions considered “wrong” or “harmful to others.”
- Shame - the internalized belief that I am not good enough.
 - An exaggerated sense of relational potency - believing that you can “make” others happy and feeling less than when you fail. (The only thing more dangerous than the desire to control other’s feelings is the belief that you can.)
 - Failed attachment in childhood.

©GEGS

Psychology of Shame

Manifestation of False Self Structure
Guilt

- A little guilt is a good thing.
- Total lack of guilt is pathological.
- Feeling guilty is about what you have **done**
NOT who you are.

©GEGS

Psychology of Shame

Manifestation of False Self Structure
Isolation/Shame

- Modernity’s ubiquitous curse.
- The blind embrace of “individualism” as the primary value.
- Feeling different and/or disconnected.
- Inability to ask for help.
- Difficulty as a “team player.”
- Fear of intimacy (fear of being engulfed).

©GEGS ©GEGS

The digital age

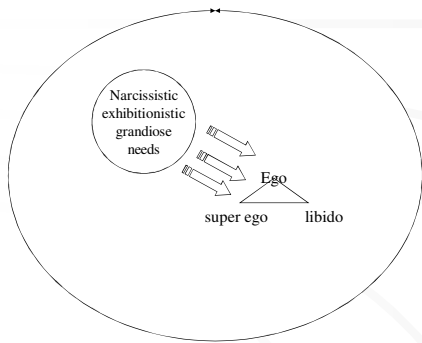
Psychology of Shame

Manifestation of False Self Structure
Shame

- The belief that at my core I am bad - therefore I must earn my value. "To be good I must do good."
- A need for constant external approval.
- A persistent fear of punishment.
- Nagging comparisons to others - "Do I measure up?"
- Extreme sensitivity to others expectations.
- People pleasing.

©GEGCS

Psychology of Shame



©GEGCS

Psychology of Addiction

Manifestation of False Self Structure

- Prone to Envy Attacks.
- Depreciation tendencies (self and others).
- Eating disorders - feeding the giant within.
- Insomnia.
- Either/Or thinking
 - splitting behaviors
 - gossiping - a way to project shame
 - blaming others for our difficulties (the devil made me do it).

©GEGCS

Psychology of Shame
Manifestation of False Self Structure

- The belief that “it” is never enough.
- Compulsive behaviors:
 - workaholism
 - perfectionism
 - chronic lateness
 - self defeating rituals
 - addictions.
- Hyper-vigilance and needs for control.

©GEGS

Psychology of Shame
Manifestation of False Self Structure

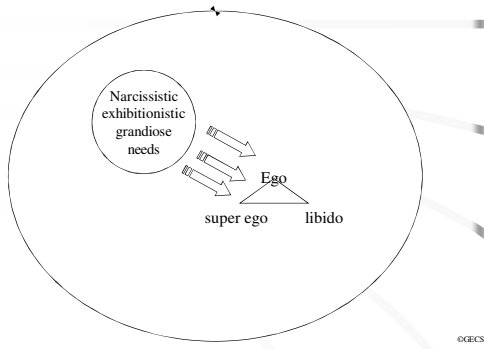
The Gift of shame gives birth to obligation which is always the safer side of freedom.

©GEGS
©GEGS

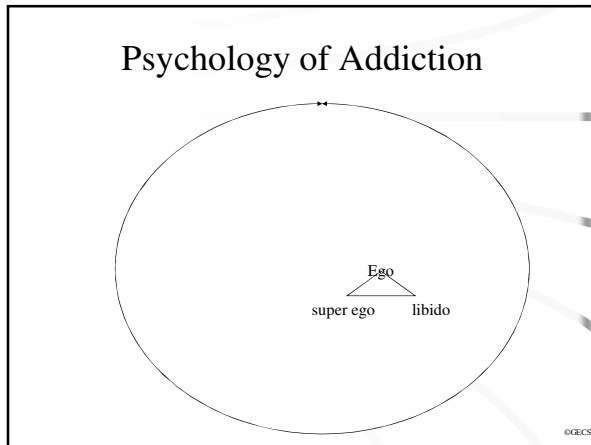
Shame	vs.	Love
<ul style="list-style-type: none"> • Need • full of expectations • obligations • conditional • assumes/projects • needs to control • sees flaws or faults • Slavery 		<ul style="list-style-type: none"> • Desire • no expectations • wanting • unconditional • no assumptions • not controlling • sees perfection • Freedom

©GEGS

Psychology of Shame



Psychology of Addiction



Psychology of Addiction

- Drugs of addiction, for the addicted, solve a fundamental structural problem within their psyche and they temporarily feel whole.
- The problem is that this fix is temporary and the behaviors, the lies, and broken promises give greater energy to the shame which then requires more "medication" just to survive.

©GEGCS

Biological + Psychological + Social + Spirituality Vulnerability
Liability Context Bankruptcy

plus
experience
equals

Addiction

©GECs

Social Context

- We are thrust into our culture and defined by it.
- We can not separate ourselves or our identity from our social context.
- When we think we are “speaking” for ourselves, our personal truth is but an extension of context.

©GECs

Social Context

Aspects of our Culture that Support Addiction

- Shame the internal emotional hemorrhage of addictive disease.
- We live in a shame based culture.
- Our inherited shame as individuals is projected on to those different than us.
- The “Isms” are real.
 - Racism.
 - Ageism
 - Sexism.
 - Heterosexism.
 - Classism.
 - Bodyism.

©GECs

Social Context

Aspects of our Culture that Support Addiction

- The “isms” project shame which becomes a meme unless challenged.
- Our economy is shame dependent.
- If we all truly felt “good enough” our consumer economy would crumble.
- The cultural message we get is that “**we are not enough**”

©GCECS

Social Context

Aspects of our treatment Culture that Support
Addiction

clean time
drug of choice
dirty urine
Think
you shouldn't have used in the first place

©GCECS

Social Context

Aspects of our Culture that Support Addiction

- Eventually the “shamed” end up believing the messages that society is telling them and shame themselves.
- We deserve our disease.
- We really are the bad people that everyone (including ourselves) believes us to be.
- I am truly so worthless not even God can love me.

©GCECS

Social Context Treatment Implications

- The acceptance of misery is NOT the goal.
- The tolerance of unavoidable pain is – but be gentle and still treat the symptoms.
- Honor the pain of early recovery and instill hope.
- Use alternative pain medications:
 - Meditation.
 - Self guided imagery.
 - Relaxation.
 - Yoga.
 - Exercise.
 - Dietary changes.

©GEGCS

Psychology of Shame What do we do?

Love

is the only true antidote to shame.
We must have the courage to operationalize
the word love into our professional lexicon
and love our patients through healthy
boundaries so they in time may love
themselves.

©GEGCS

Sources and further reading:

- Andreasen, Nancy C., *Brave New Brain : Conquering Mental Illness in the Era of the Genome*, Oxford Press, New York, 2003.
- Behrens, Alan and Satterfield, Kristin: "Report of Findings from a Multi-Center Study of Youth Outcomes in Private Residential Treatment", presented At the 114th Annual Convention of the American Psychological Association, New Orleans, Louisiana, August 12, 2006.
- Brizendine, Louann, *The Female Brain*, Random House, Inc., New York, New York, 2006.
- Damasio, Antonio, *Descartes' Error: Emotion, Reason, and the Human Brain*, Penguin Books, London, 2004.
- Kohut, Heinz, *The Analysis of the Self*, International Universities Press, New York, New York, 1971.
- Kohut, Heinz, *The Restoration of the Self*, International Universities Press, New York, New York, 1977.
- Kou, Francis E., and Taylor, Andrea Faber, "A Potential Natural Treatment for Attention Deficit/Hyperactivity Disorder: Evidence from a National Study", *American Journal Of Public Health*, September 2004;94: 1580 – 1586.
- LeDoux, Joseph, *The Synaptic Self: How Our Brains Become Who We Are*, Viking Penguin, New York, NY, 2002.
- LeDoux, Joseph, *The Emotional Brain: the Mysterious Underpinnings of Emotional Life*, Viking Penguin, New York, NY, 1999.
- Lewis, Thomas, *A General Theory of Love*, Vintage Press, New York, NY, 2001
- Pert, Candice B., *Molecules of Emotions: the Science behind Mind-Body Medicine*, Scribner, New York, NY, 1997.
- Nathanson, Donald L., *Shame and Pride: affect, sex, and the birth of the self*, WW Norton & Co., New York, New York, 1992.
- Smith, Guillen, Interview Addressing Therapeutic Issues in Wilderness Treatment Programs, conducted by Jeffrey M. Georgi, Greensboro, North Carolina, September 4, 2009.
- White, Aaron, *Keeping Adolescence Healthy*, BookSurge Publishing, Charleston, SC, 2008

©GEGCS
