

*2013 Kentucky School of Alcohol and Other Drugs Studies
40th Year!*

Presents

*Effective Addictions Treatment in a
Managed Care System*

Presenter
Mark Sanders, LCSW, CADC

On The Mark Consulting

Home
Biographical Information
Workshops/Seminars
Consulting
Book Store and Home Study
Free Resources
Testimonials
Contact Us



Our mission is to help individuals and organizations reach their potential through speaking, training and consulting. Our superior consumer services speak for itself. We have had over 90% repeat business over the past 25 years.

Mark Sanders
On The Mark Consulting
Mark Sanders
3170 N. Sheridan Road
Suite 8618
Chicago, IL 60657
(773) 549-7814
onthemark25@aol.com

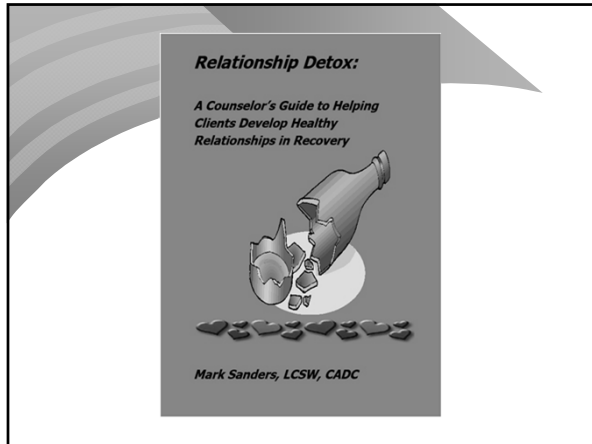
www.onthemarkconsulting25.com

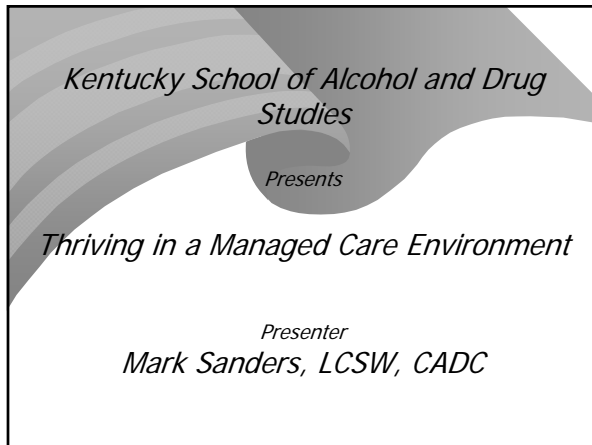
Powered by Microsoft Office Live
All rights reserved

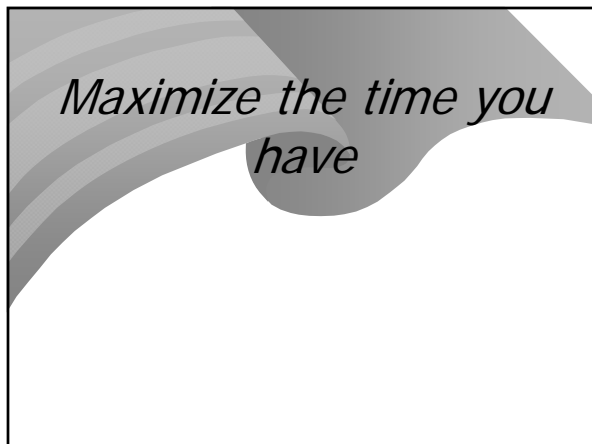
Website Features

- *Free articles*
- *Inspirational/Informational Blog*
- *Bookstore*
- *Private Practice*

www.onthemarkconsulting25.com







A Review of the Research

- *50% of outpatients miss their second session*
- *50% of inpatients drop out of treatment prematurely*
(NIDA)
- *Clients make most of their progress within the first 6 sessions*
(The Heroic Client)

Increase Second Session Attendance

- *Joining (small talk)*
- *3 sessions at a time*
- *Focus on strengths*

Traditional intake questions leave clients feeling increased stigma, diseased and shame

Traditional intake questions

- *Do you work?*
- *What is your income?*
- *What is the highest grade level you completed?*
- *How many times have you gone to treatment?*
- *How many times did you relapse?*

Traditional intake questions continued

- *Have you ever been treated for mental illness?*
- *Ever attempted suicide?*
- *Have you ever been arrested?*
- *Do you have a felony?*
- *Ever shared a dirty needle?*
- *Ever had a venereal disease?*

Strength Based Questions

- *What do you do well?*
- *How have you been able to endure so much?*
- *What do you like to do in your leisure time?*
- *What are the best 3 moments you can recall in your life?*

Strength Based Questions Continued

- *What is the best thing you ever made?*
- *What have you learned from what you've gone through?*
- *Which of your challenges have taught you the most about your own resilience?*
- *What sources of strength did you draw from as you faced those challenges?*

Make the Client the Hero

Four Factors That Lead to Client Engagement
(Scott Miller Ph. D.)

- *The Therapeutic Model*
- *Counselor Hopefulness*
- *Therapeutic Relationship*
- *Client Factors*

Extra Therapeutic Factors

- *Success prior to addiction*
- *A good education*
- *Employability*
- *Vocational skills*
- *Reading comprehension*
- *Love*

Extra Therapeutic Factors Continued

- "A praying grandmother"
- The belief that God loves you
- The family name
- Leadership
- Internal resilience
- Cultural pride

Previous Approach to Addictions Counseling

Counselor Client

→ ←

→

→

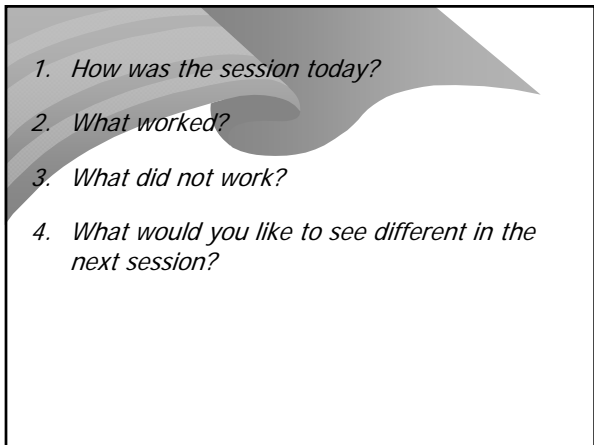
→

Newer Approach

Counselor Client

→ ←







Strengthen the relationship with the 12 Step community

Work with the family

Non-traditional Linkages

- *GED Programs*
- *Community Colleges*
- *Vocational Schools*
- *Technology Institutions-STEMM*
- *Toastmasters*
- *Churches*
- *Medicine men*
- *Industries*





FELONY FRANKS® HOT DOGS

Felony Frank	"Jumbo Hot Dog"	\$3.75
Misdemeanor Weiner	"Regular Hot Dog"	\$2.35
Cell Mate Dog	"Double Dog"	\$3.45
Custody Dog	"Cheese Dog"	\$2.85
Chain Gang Chili Dog	"For Chili Lovers"	\$2.85
Pardon Polish	"Polish Sausage"	\$3.65

Mustard, grilled onions, sports peppers
 All dogs are served with Fries, and choice of mustard, onions,
 relish, tomato, sport peppers and celery salt.
 Ketchup upon request

All 1/4 lb. Burgers **PROBATION BURGERS**

Hamburger	\$3.25	Double Hamburger	\$4.25
Cheeseburger	\$3.75	Bacon Cheeseburger	\$4.50
Double Cheeseburger	\$4.75	Double Bacon Cheeseburger	\$5.50

The WARDEN Special: \$5.95
 Chopped Steak, choice of cheese, on garlic bread with grilled onions
 All burgers include ketchup, onions, pickles, mustard

Choice of Cheese include American, Swiss, or Mozzarella

Advocate for Change

Use Research

*2013 Kentucky School of Alcohol and
Other Drugs Studies
40th Year!*

Presents

*Effective Addictions Treatment in a
Managed Care System*

Presenter
Mark Sanders, LCSW, CADC
